

# VP890/54

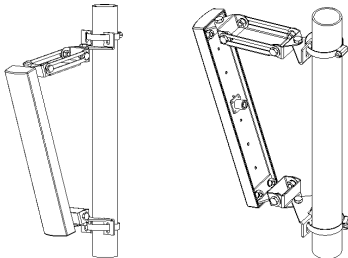
Vertical Flat Panel Antenna, 90 deg, 14.5 dBi



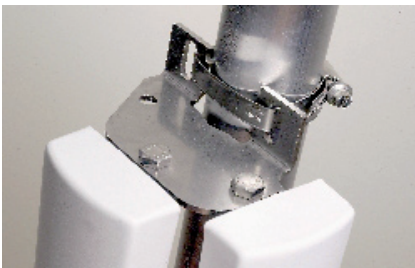
## Specifications

Type	directional panel antenna
Polarization	vertical
Frequency	5470-5875 MHz
Impedance	50 ohm
VSWR	<1.7:1
Gain	14.5 dBi
HPBW	azimuth 90° elevation 10°
Connector	N female on rear (90 deg angle adapter included)
Power handling	20 W
Mount	bracket for wall or 35-50 mm mast incl stainless hose clamp
Size	W 67 mm H 355 mm D 90 mm (incl mount)
Weight	710 g net, 790 g shipping
Material	reflector - aluminium radome - ABS
Color	white
Other	DC grounded mount adjustable in azimuth ±45°

### Accessories:



Compact tilt mount for VP890/54

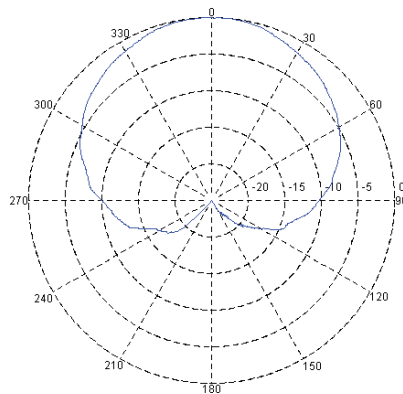


Mount bracket for 2 x VP890/54 at 60° or 90°

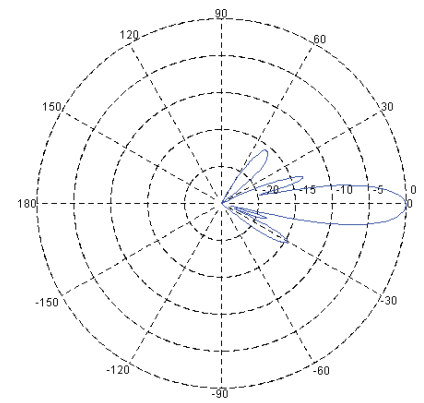
### Product No

54890

Smarteq reserves the right to change specifications without prior notice.



Azimuth (H-field) radiation pattern



Elevation (E-field) radiation pattern

**SMARTEQ™**  
antennas

550055C

Smarteq develops and supplies high-quality antennas and antenna systems for the wireless transfer of speech and data, communication to and from vehicles and machine to machine. Our staff is fully focused on developing high-performance antennas that will continue to set new standards of excellence that will exceed our customers' expectations

**Smarteq Wireless AB**

P.O. Box 4064 | SE-182 04 Enebyberg | Sweden

[www.smarteq.com](http://www.smarteq.com)



Smarteq is certified according to  
ISO/TS 16949, ISO 14001